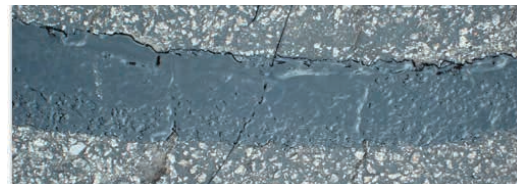


PATCHING & REPAIRING SURFACE



To ensure that the floor is pH acceptable, the floor should be thoroughly rinsed with water removing any trace of residue that might be present from the cleaner/degreaser that was used to clean the floor. To create a uniform surface, it is important to fill holes, voids and cracks in the floor prior to coating. Use Epoxy Waterproofing and Patching Compound to repair large cracks (over 1/4"), gaps and holes. Use Sure Patch to smooth over small cracks, pitted or worn areas. Follow the label directions and allow the patching materials to dry before finishing with the new coating.

ANCHOR-IT #2447

Two-Part Epoxy Anchoring System

- Two-component, 100% solids, rapid setting, epoxy anchoring system
- Packaged in easy-to-use 300 mL dual cartridges that assures the correct portioning and thorough mixing of the epoxy, which is color-coded to assure that mixing is complete
- Wide variety of uses including setting of machine anchor bolts for load-bearing applications. May be applied to dry or damp concrete, or in humid conditions



C-JOINT #2445

Two-Component Floor Joint Sealer

- Two component, 100% solid, heavy-duty epoxy joint filler for industrial floors
- May be used for repairing spalls, cracks and damaged joints
- Excellent wear resistance and retains its resiliency over time



CRACK FILLER #2123

Two-Part Epoxy Resurfacer For Concrete Repair

- Resurface spalled or pitted concrete
- Repair small cracks or fill in uneven wear areas
- Exhibits excellent clarity with good chemical, wear and abrasion resistance



EPOXY WATERPROOFING & PATCHING COMPOUND #2457

Sealant for Masonry & Concrete Patching

- Creates a permanent water-resistant bond
- Resistant to most industrial chemicals
- Patches and anchors stronger than cement
- Color coded to ensure thorough mixing
- 100% solids



RAPID SET #2112

Low Temperature Epoxy Binder

- Low temperature application, two-component structural epoxy
- Designed to be mixed with graded aggregates for resurfacing at low temperatures (down to 35°F) or for repairs and resurfacing where time is of the essence at higher temperatures
- Will cure to yield a hard, dense, abrasion-resistant surface in as little as 2 hours



SET QUICK #2129

Epoxy Gel Anchor

- Certified to conform to NSF/ANSI Standard 61 by WQA
- High-strength structural adhesive
- Ideal for anchoring dowels, bolts, reinforcing steel and threaded rod
- Easy dispensing and no mixing with prefilled cartridges as well as bulk packaging
- Moisture tolerant
- Fast setting
- Nonsag gel consistency



SURE PATCH #2466

Epoxy Concrete Crack Repair Kit

- Three-part system consisting of an activator, base and quartz filler
- When mixed, they create a mortar-like compound providing a high strength, water-tight bond
- Wear and corrosion-resistant
- Permeates into the pores of crumbling, cracked or split cement



TRUE BOND PATCH #2462

RTU Asphalt Patching Compound

- Ready-mixed compound for repairing holes and expansion joints in asphalt, concrete, brick, stone, wood or any solid base
- Made from a combination of asphalt, resins, hard aggregate and wetting agents
- No special equipment needed, no waiting time and can take traffic immediately
- Will support the heaviest of traffic and is resistant to water



SURE PATCH