



WEED AND TURF GUIDE

HERBICIDES

Professional maintenance of buildings and grounds would be incomplete without the control of undesirable weeds and grasses. Utilizing a wide variety of active ingredients and carrier solvent systems, our line of weed and turf specialties represents the finest in non-crop weed control products. Whether your needs call for selective or non-selective, soil sterilants or non-sterilants, we have the product you can rely on. We offer both ready to use and highly concentrated formulas for your maximum savings.

Applications:

| | | | |
|---------------|------------------|-------------|---------------------|
| Parking Lots | Bridge Abutments | Shrub Areas | Ornamental Beds |
| Rail Lines | Fence Lines | Fences | Building Perimeters |
| Tank Farms | Loading Ramps | Evergreens | Ponds/ Lakes |
| Storage Yards | Pipe Lines | Hedges | Drainage Ditches |



Effective Against:

| | | | |
|--------------|-----------------|--------------------|----------------|
| Foxtail | Bouncing Bet | Annual & Perennial | Naiad |
| Crabgrass | Horsetail | Weeds & Grasses | Water Hyacinth |
| Ragweed | Wild Oats | Algae | Aquatic Weeds |
| Ryegrass | Broomsedge | Elodea | Coontail |
| Cheatgrass | Turkey Muellein | Salvinia | Pondweed |
| Lambsquarter | Saltgrass | Watermilfoil | Water Lettuce |
| Johnsongrass | Bracken Fern | Bladderwort | |



For Use By:

| | | | |
|-----------------------|-------------------------|---------------------|-------------------|
| Bus Garages | Freight Carriers | Housing Authorities | Water Treatment |
| Fleet Operations | Hospitals | Railroads | Facilities |
| Utility Companies | Correctional Facilities | Hotels/Motels | Industrial Plants |
| Municipalities | Nursing Homes | Factories | |
| School Systems | Court Houses | DOT's | |
| Colleges/Universities | Parks & Rec | Military Facilities | |



2 HOURS



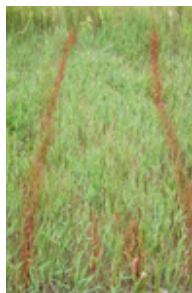
21 HOURS



4 DAYS

WEED KILL #2811

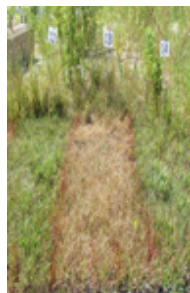
- 3.73% Prometon, 1:10 concentrate, soil sterilant
- Residual action prevents growth up to 1 year
- Quickly and effectively kills all vegetation
- A single application stops weeds for an entire growing season
- Concentrated
- Cost effective



24 HOURS






7 DAYS



10 DAYS

WEED PRO #3869

- 4% Bromacil granules, soil sterilant, VOC compliant
- Long-lasting residual action
- Easy-to-spread granules
- Kills a wide range of annual and perennial weeds and grasses
- Offers total kill with long-lasting residual action
- For use on non-cropland areas

| HERBICIDES | DILUTION RATE COVERAGE: | ACTIVE INGREDIENTS: | KILL TIME/ RESIDUAL | IMAGE |
|---|---|--|---|---|
| EDGE #2800 Non-sterilant • Non-selective This combination of weed-killing ingredients is a contact killer that kills by absorption through the leaves. It can be used on land and for aquatic applications. | Aquatic and land use Dilute approximately 1:8 for land use | 1.85% Diquat dibromide | <ul style="list-style-type: none"> • Almost immediate kill • Not residual |  |
| TERMINATOR #2808 Sterilant • Non-selective Highly concentrated herbicide that provides up to one whole season of control. It is effective for use on non-cropland areas for control of brush and many undesirable weeds and grasses. | Dilutes 1:9 with water Approximately 1,500 sq. ft. | 2.44% Lithium salt of Bromacil | <ul style="list-style-type: none"> • Effects slow to appear • Long-term |  |
| UREABOR #2810 Sterilant • Non-selective Effective in eliminating established vegetation, provides quick knockdown of weeds and grasses and provides season long control. | 1.8 lbs covers 100 sq. ft. Apply dry granules with hand spreader | 49.0% Sodium Metaborate 30.0% Sodium Chlorate 1.5% Bromacil | <ul style="list-style-type: none"> • Quick knockdown • Long residual |  |
| WEED KILL #2811 Sterilant • Non-selective Non-selective persistent herbicide for use where control of all vegetation is desired. WEED KILL is concentrated and offers total kill with residual action. | 1 gl: 10 gl water 1,000 sq. ft. | Prometon 3.73% | <ul style="list-style-type: none"> • Up to one growing season |  |
| WEED OUT #2805 Sterilant • Non-selective Ready-to-use, solvent-based, non-selective weed killer. It is particularly effective in areas where undesirable vegetation is tall and well established. | One gallon covers up to 1,000 sq. ft. | 1.09% 2,4-D ester for foliage burn-down 0.98% Bromacil for root action control | <ul style="list-style-type: none"> • Fast burndown • A full growing season |  |
| WEED OUT II #2806 Sterilant • Non-selective 100% VOC compliant, ready-to-use, solvent-based, non-selective weed killer. It is designed to be applied undiluted as a spray on non-cropland areas where bare ground is desired. | One gallon covers up to 1,000 sq. ft. | 1.09% 2,4-D ester for immediate foliage burndown 0.98% Bromacil for root action control | <ul style="list-style-type: none"> • Fast burndown • A full growing season |  |
| WEED OUT IN A CAN #1805 Sterilant • Non-selective Solvent-based, non-selective weed killer that offers immediate burndown through the plant's foliage but also season-long residual control. Best results are obtained when applied in late spring or early summer and when predominant species are well established. | 1 can per 174 sq. ft. | Bromacil 0.98% 2-4-D 1.09% | <ul style="list-style-type: none"> • Fast acting • A full growing season |  |
| WEED PRO #3869 Granular total-kill herbicide with residual. The formula provides long-lasting control of annual and perennial weeds and grasses for up to 12 months. Sprinkle on areas to be treated, and wet with a hose or apply prior to rain. Works by penetrating the root system. | Ready-to-use | Bromacil 4.0% | <ul style="list-style-type: none"> • Fast knockdown • Long-lasting residual |  |