

- 1) To open the lubricator, place it upright on a flat surface. With one hand on top of the transparent housing, press firmly, with the other hand, hold the ribbed surface of the locking ring and turn it counter-clockwise. Remove the locking ring and the transparent housing.
- 2) If necessary, prime the AUTO-LUBE pump with a hand grease gun. This step is required if the AUTO-LUBE was permitted to operate without a cartridge in place or operate with an empty cartridge. Do this by placing the outlet of the hand grease gun on the inlet of the AUTO-LUBE unit and pumping until grease appears at the outlet end of the AUTO-LUBE. Two pumps of grease are generally sufficient.
- 3) If using an AUTO-LUBE HPS or ONE, remove the black rubber seal to reveal the battery chamber, then insert the battery pack. The battery pack has to be inserted according to the instructions on the pump housing. When the battery pack is inserted, the motor will be activated for a moment. Put the rubber seal back in place.
- 4) Remove the paper, disk-shaped card from the replacement cartridge and fill in the "Start Date" and "Change Date". The change date is determined by the programming, which can be looked up on your programming chart. Place the card on the inside top surface of the transparent housing, so that the information can be viewed from the top of the lubricator. Replace the spring and compression plate.
- 5) Remove the plug from the cartridge and carefully squeeze air out of the cartridge until grease begins to emerge from the outlet. This step avoids pump airlock and ensures an uninterrupted flow of grease to the piston pump.
- 6) Place the cartridge on the inlet of the pump housing. The male end of the lubricant cartridge should seat into the circular female groove in the end of the pump housing.
- 7) Replace the housing assembly (transparent housing, spring and compression plate, and black locking ring) over the lubricant cartridge and red housing. The compression plate should be seated evenly on the lubricant cartridge. With one hand on top of the transparent housing, press down firmly. With the other hand holding the locking ring by its ribbed surface, turn it clockwise until it clicks into the locked position. Ensure that the locking ring locks by holding it on its smooth surfaces and turning clockwise. If the housing is correctly locked into place, it will not be possible to open it by holding the locking ring on its smooth surfaces.

To ensure that the AUTO-LUBE is working, follow the steps listed for each of the Power Options.

AUTO-LUBE HPS & ONE: While aiming the lubricator downwards, gently push and release one of the three switches at the bottom of the pump housing.

AUTO-LUBE PLCD: Screw the lubricator onto the Power-Through-AUTO fitting, and then start PLC program.

It is important that this step is done with a lubricant cartridge installed. Operating the AUTO-LUBE without a cartridge or with an empty cartridge will cause the pump to lose its prime and could damage internal components.

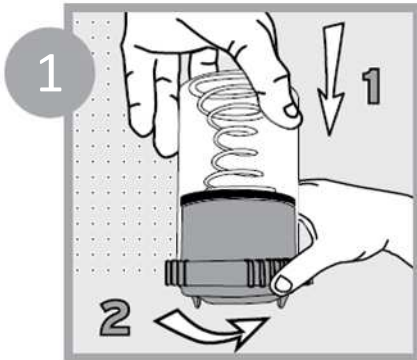
- 8) Screw the AUTO-LUBE lubricator onto the AUTO fitting (which should already be screwed into the bearing housing) using care not to damage the threads. Once the AUTO-LUBE is mounted onto the AUTO fitting, it will immediately start one or two ejection cycles. This is the test function.



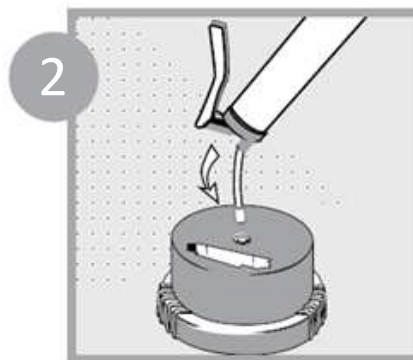
Quality you can count on!

Pro Chem Inc.
www.procheminc.com

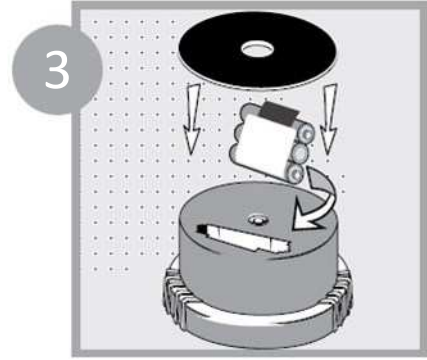
1475 Bluegrass Lakes Parkway
Alpharetta, GA 30004 tel 800-241-8180



To open, place the lubricator upright on a flat surface. Press firmly and turn locking ring counter-clockwise while holding the ribbed surface.



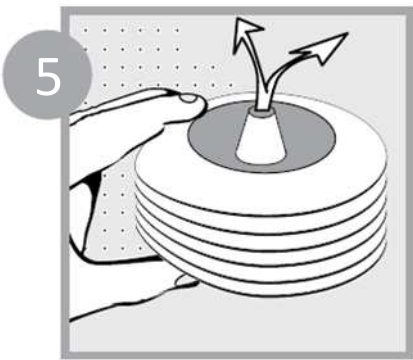
If necessary, prime the AUTO-LUBE pump with a hand grease gun.



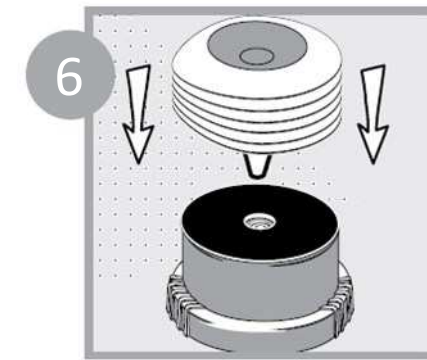
Remove the black rubber seal and insert the battery pack.



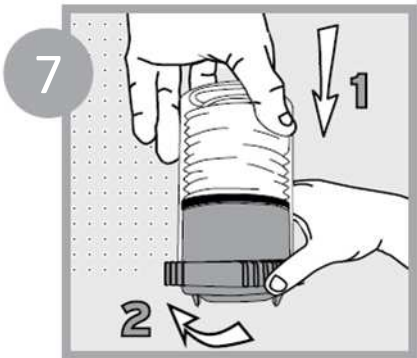
Fill in the "Start Date" and "Change Date" on the paper disk included with the kit. Insert it in the clear housing and reinsert the spring.



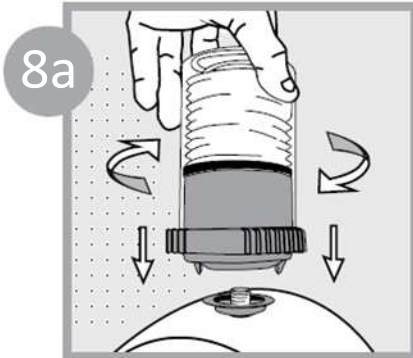
Carefully squeeze any air out of the cartridge until grease begins to emerge from the outlet.



Place the cartridge on the inlet of the pump housing.



Replace the clear housing assembly over the lubricant cartridge. Be sure to turn the locking ring until it clicks in the locked position.



Screw the AUTO-LUBE back on the AUTO fitting.



The lubricator should activate a single cycle.