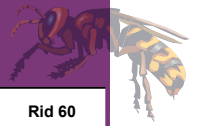
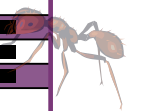




INSECT APPLICATION CHART



	Away Plus/ Away Plus Wipes	Attack	Big Blast/ Buzz Off	Blitz	Bug Barrier Bands	Pro-Cide	Dri-Cide	Garb-Cide	Rid 60
Ants		■		■		■	■	■	■
Bedbugs						■	■	■	■
Bees			■				■		■
Beetles		■					■		■
Biting Flies	■								
Black Flies	■								■
Black Widow Spiders		■						■	
Book Lice							■		
Boxelder Bugs							■		
Brown Dog Ticks		■					■	■	■
Cadelles		■					■		■
Carpenter Ants		■					■		
Carpenter Bees							■		
Carpet Beetles		■				■	■	■	■
Centipedes						■	■		■
Cheesemites		■					■		■
Chiggers	■								
Cigarette Beetles		■					■		
Confused Flour Beetles		■				■	■		■
Clothes Moths									■
Clover Mites							■		■
Cluster Flies									
Cockroaches		■				■	■	■	■
Crickets		■				■	■	■	■
Deer Flies	■					■			■
Deer Ticks									■
Drugstore Beetles		■					■		■
Dust Mites							■		
Earwigs							■		
Fire Ants		■		■			■		
Firebrats						■	■		■
Flat Grain Beetles		■					■		
Fleas	■	■			■	■	■	■	■
Flies	■	■			■		■	■	■
Flour Beetles		■					■		
Fruit Flies									■
Gnats	■	■			■	■			■
Grain Mites		■				■	■		■
Grain Moths						■			■
Grain Weevils		■				■	■		■
Hornets			■				■		■
Horse Flies						■			
House Flies						■			■
Indian Meal Moths									■
Lesser Grain Borers		■					■		
Lice						■	■		■
Lone Star Ticks		■					■		■
No-see-ums	■				■				
Mealworms							■		■
Mediterranean Flour Moths									■
Merchant Grain Beetle		■					■		
Millipedes		■				■	■		■
Mites		■				■	■		■
Mosquitoes	■	■			■	■		■	■
Moths		■				■			■
Palmetto Bugs						■	■		■
Pharaoh Ants							■		
Red Flour Beetles		■				■	■		■
Rice Weevils		■				■	■		■
Sawtoothed Grain Beetles		■				■	■		■
Scorpions		■				■	■	■	■
Silverfish		■				■	■	■	■
Skipper Flies									■
Sow Bugs (Pillbugs)		■				■	■	■	■
Spiders		■				■	■	■	■
Stable Flies	■					■			
Termites							■		
Ticks	■	■				■	■	■	■
Tobacco Moths									■
Warehouse Beetles		■					■		
Wasps			■				■		■
Waterbugs		■				■	■	■	■
Weevils		■					■		■
Yellow Jackets			■				■		



Insecticides



Quality you can count on!



Pro Chem's Insecticide program is designed to provide a broad array of some of the finest products available anywhere. Whether it's safely killing ants or quickly eliminating a nest of hornets, Pro Chem provides easy to use solutions that produce results.

#250901 - Attack

- RTU liquid insecticide
- Long term residual control (up to 4 months)
- Rapid knockdown, kills fire ants
- Contains Prallethrin and Esfenvalerate

#154001 - Away Plus

- Aerosol personal insect repellent
- 25% Deet
- Non-staining, pleasant fragrance
- Protects against mosquitoes, gnats, ticks, and fleas

#252201 - Away Plus Wipes

- Personal insect repellent towellettes with 25% Deet
- Formulated with aloe to keep skin smooth and soft
- Stain free formula will not harm clothes

#151501 - Big Blast

- Aerosol bee, wasp and hornet spray
- Non-conductive up to 40,700 volts
- Long distance kill, up to 20 feet away
- Contains Tetramethrin, Permethrin, and Piperonyl Butoxide

#152501 - Blitz

- Aerosol fire ant injector spray
- Fast working and convenient to use
- Residual, working up to 4 weeks

#354301 - Bug Barrier Bands

- All-natural insect repelling wrist bands
- Forms a protective barrier against blood sucking insects
- Breakaway strap for safety
- Not affected by perspiration and lasts up to 120 hours

#154401 - Buzz Off

- Aerosol bee, wasp and hornet killer
- Dielectric breakdown voltage of 47,300 volts
- Shoots a forceful stream to 20 feet
- Contains Tetramethrin, Permethrin, and Piperonyl Butoxide

#153301 - Pro-Cide

- Water-Based Flying/Crawling Insect Killer
- Active Ingredient Permethrin 0.25%
- Controls ants and cockroaches for up to 4 weeks
- For use on livestock and their premises

#350401 - Dri-Cide

- Powdered crack and crevice insecticide
- Dehydrates on contact with silicon dioxide
- Powder clings to insect bodies and is carried back to nest
- Packed in easy to use powder applicator bottles
- Contains Pyrethrin for quick knockdown of pests

#150301 - Garb-Cide

- Aerosol residual insecticide, control of crawling and flying insects
- For use indoors and outdoors, will not stain woodwork
- 18,000 volt dielectric strength, pleasant cherry fragrance
- Contains Prallethrin to kill bugs instantly, Esfenvalerate for 7 week residual

#282205 - Rid 60

- 60 day residual insecticide, ready to use
- For use indoors and outdoors
- Can be sprayed on mattresses to control bedbugs
- Water-based formula is safe for use on livestock to control fleas and ticks, may be used in a fogger
- Formulated with Permethrin for maximum insect killing power and long lasting residual action



N,N-diethyl-m-toluamide (Deet)

Active ingredient used to repel biting insects such as mosquitoes and ticks. Developed by the U.S. Army in 1946.

Esfenvalerate

A synthetic pyrethroid insecticide which is used on a wide range of pests such as moths, flies, beetles, and other insects.

Pyrethrin

A natural extract of the Chrysanthemum flower used as an ingredient in insecticides for fast knockdown. It kills insects on contact by causing paralysis. Offers low toxicity to humans and warm-blooded animals.

Permethrin

A synthetic pyrethrum with rapid knockdown of insects and relatively low toxicity to warm blooded animals. Toxic to cats. Residual activity is extended due to photostable characteristics in the presence of sunlight.

Prallethrin (ETOC)

A synthetic pyrethroid with contact insecticidal properties. Its chemical makeup is (RS)-2-Methyl-4-oxo-3-(2-propynyl) cyclopent-2-enyl (1RS)-cis, trans chrysanthemate.

Silicon Dioxide

Dehydrates insects to death by eliminating needed moisture from their bodies. Powder clings to insects and is spread throughout their entire nest.

Synergist

An ingredient in insecticides which enhances the effectiveness of other ingredients. Synergists allow other ingredients to perform at a higher level than they normally would on their own. **Piperonyl Butoxide** is a common synergist added to insecticides.

Synthetic Pyrethrin

Provide the same benefits as natural pyrethrins but are less expensive to produce. They were developed due to a shortage of natural pyrethrins in the 70's. Examples include Resmethrin, Tetramethrin, and Permethrin.

Tetramethrin

A synthetic pyrethroid that is a fast working contact insecticide used to target a range of flying and crawling insect species.