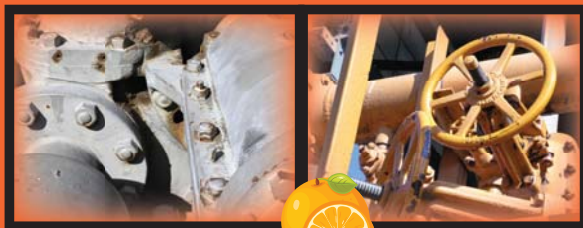




CITRA BLAST

Natural Cleaner Degreaser & Deodorant

WITH POWERFUL FLUSH ACTION VALVE



INDUSTRIAL STRENGTH

CITRUS AEROSOL

- High Pressure Flushing Action
- Low Residue/Free Rinsing with Water
- Multiple Uses For: Construction and Heavy Equipment, Car and Truck Engines
- Excellent Asphalt Removal
- Great Adhesive Remover
- All Organic Ingredients



DANGER
EXTREMELY FLAMMABLE

HARMFUL OR FATAL IF SWALLOWED. EYE AND SKIN IRRITANT
KEEP OUT OF REACH OF CHILDREN. CONTENTS UNDER PRESSURE

SEE SIDE PANEL FOR ADDITIONAL PRECAUTIONS. Si usted no entiende la etiqueta, busque a alguien para que se la explique a usted en detalle. (If you do not understand this label, find someone to explain it to you in detail.)

NET WT.: 16 OZ (1 LB) (453 G)

Citra Blast is the perfect solution for cleaning and degreasing metal surfaces. Our Environmentally Safe formula is non-acid, non-caustic, non-corrosive and contains no petroleum distillates or chlorinated solvents. Asphalt, oil, grease, tar, and grime are quickly dissolved and eliminated with its heavy flushing action. This biodegradable product is made from all organic ingredients and is a safe alternative to using chlorinated solvents. The high pressure spray blasts away grease and grime leaving a low residue, so the parts can air dry or be rinsed clean with water.

USE ON:

Asphalt Equipment, Automobile Motors, Concrete Equipment, Construction Equipment, Garbage Dumpsters and Trucks, Landscaping Equipment, Masonry Equipment, Road Equipment

DIRECTIONS:

Hold can approximately 8 inches from surface, directing actuator at the soiled area. Spray liberally, allowing the product to penetrate grease, tar, or grime. For stubborn and highly soiled areas allow extra contact time, agitating with a brush if necessary. Area should then be wiped clean with damp cloth or rinsed thoroughly with water.

CITRA BLAST DANGER

KEEP OUT OF REACH OF CHILDREN. READ LABEL AND SDS BEFORE USE. EXTREMELY FLAMMABLE AEROSOL. CONTAINS GAS UNDER PRESSURE; MAY EXPLODE IF HEATED. MAY BE FATAL IF SWALLOWED AND ENTERS AIRWAYS. MAY CAUSE AN ALLERGIC SKIN REACTION. CAUSES SKIN AND SERIOUS EYE IRRITATION.



Avoid breathing mist/spray. Wash hands thoroughly after handling. Wear protective gloves. Wear eye or face protection. Contaminated clothing must not be allowed out of the workplace. Keep away from heat, sparks, open flames and hot surfaces. - No smoking. Do not spray on an open flame or other ignition source. Pressurized container: Do not pierce or burn, even after use.

FIRST AID

IF SWALLOWED: Immediately call a poison center or a doctor. Do NOT induce vomiting. **IF ON SKIN:** Wash with plenty of soap and water. If skin irritation or rash occurs get medical attention. Take off contaminated clothing and wash it before reuse. **IF IN EYES:** Rinse cautiously with water for several minutes. Remove contact lenses, if present and easy to do. Continue rinsing. If eye irritation persists: Get medical attention.

Protect from sunlight. Do not expose to temperatures exceeding 50° C/122° F. Store in a well-ventilated place. Store locked up. Dispose of contents and container in accordance with all local, regional, and national regulations.

An Exclusive Product of: PRO CHEM, INC.
1475 Bluegrass Lakes Parkway, Alpharetta, GA 30004
TO REORDER CALL: 1-800-241-8180 • www.procheminc.com

INGREDIENTS (C.A.S.#): Citrus Terpene (5989-27-5), Linear alcohol ethoxylate (68439-46-3), Carbon Dioxide Propellant (124-38-9).

HMS RATINGS: Health: 2; Flammability: 2; Reactivity: 0; Maximum Personal Protection: G

Product Code: 1634



This product is designed exclusively for industrial and institutional use by trained personnel. This product is sold "as is" and the manufacturer makes no warranty, express or implied, of merchantability, fitness for a particular purpose or otherwise.