



Phone: (770) 740-2800 | Fax: (770) 740-2807 | Toll-Free Phone: (800) 241-8180

Workplace accidents have a major impact on many businesses' bottom line. Recent statistics say unintentional workplace injuries are a \$192 billion problem. Things like slips, falls, or Personal Protection Equipment (PPE) noncompliance can all be sources of potential safety concerns.

In 2008 the National Safety Council (NSC) stated that the problem was a \$170 billion problem, six short years later, it is up by \$22 billion. Pro Chem, Inc. has expanded its product line and has a solution that is right for businesses of all sizes when it comes to potential safety concerns.



1475 Bluegrass Lakes Parkway | Alpharetta, GA 30004 | www.procheminc.com

ABSORBENTS

Why does your facility need Sorbents?

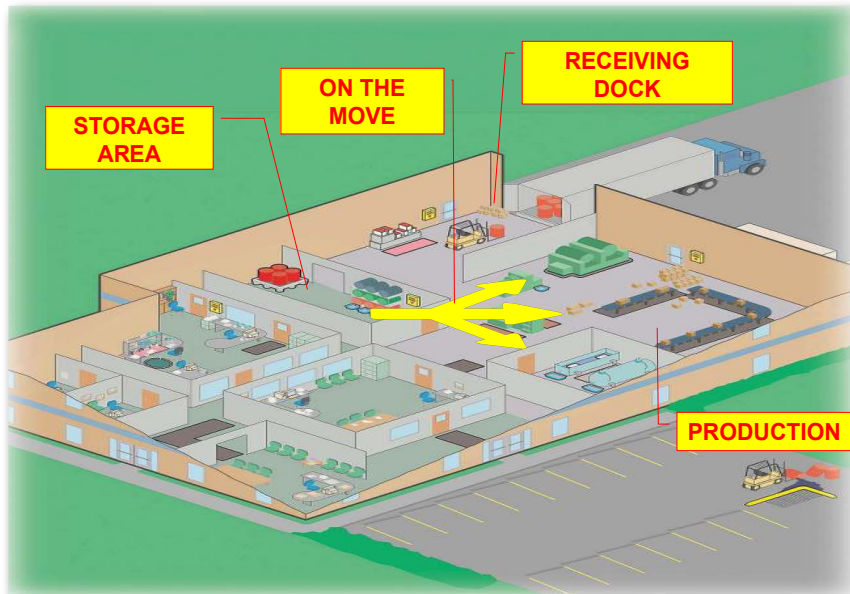
- Spill clean-up
- Fluid Control
- Slip and fall prevention
- Local/state/federal regulations
- Good housekeeping



What areas in your facility need Sorbents?

Receiving Dock - Liquids enter a facility through the receiving dock. Containers can be dropped, ruptured, mishandled, or punctured. Tanker truck valves, couplings, and hoses might leak or rupture.

Storage Areas - There is the potential for slow leaks from containers where the liquid can begin to collect and pool creating not only a slip and fall hazard, but possibly could be a violation of Federal Regulation for Secondary Containment.



Most industrial sites are located within a city or county infrastructure. In this situation drains in the building lead to the local waterway or sewage treatment facility. This customer utilizes the area around the dispensed product. In order to follow local waste laws, he needs to prevent the overflow from going into the drain. He purchased one of our drain covers to enable him to be compliant.

Production - Not only is there the potential for slip and fall risk in your production area, used fluids and sorbents must be collected from machines and processes, placed in containers, and put into storage.

Moving and Dispensing Areas - Once removed from storage, the liquids are either pumped directly into machine or process, or it is dispensed into smaller containers.

Familiarize yourself with the Law - Disposal regulations usually vary by state and even local municipalities. It is recommended that you familiarize yourself with the laws that govern your customer's areas by referring to the EPA's website at www.epa.gov. You will be able to identify whether your customer has wastes considered to be hazardous.



ENVIRO SORB

ENVIRO SORB is an all-purpose 3-ply encapsulator designed to absorb any WATER or OIL-BASED fluids. Depending on the nature of the spill, ENVIRO SORB is a non-shredding material ideal for a wide variety of areas and conditions. It readily absorbs many fluids, such as lubricants, hydraulic fluids, acids, cutting fluids, coolants, solvents, degreasers, paints, inks, fuel oil, and much more.



Drum Top Pad

The overflow when dispensing this liquid is absorbed by the Enviro Sorb Drum Top Pad. This keeps the product from being accidentally transferred to another surface when the bucket is put into place for application.



After incurring a workman's compensation claim, our customer asked for assistance in providing a safer workplace. His production line was a high use area and the product being packaged left a slick residue. He found that a combination of Enviro Sorb Pads and Enviro Sorb Rugs created a safe working environment and has had no claims since he began using our product several years ago.

29 CFR 1910.107(G)(2) OSHA requires all spraying areas to be "...Kept as free from the accumulation of deposits of combustible residues as Practical.



Before using Enviro Sorb Universal Pad



After using Enviro Sorb Universal Pad

Avoid slips and falls in pedestrian areas with our Enviro Sorb line. They can be applied quickly and easily allowing immediate foot traffic.

SAFETY FIRST #3473

SAFETY FIRST is a granular material that will absorb a capacity of 150 % of its weight, which is 4 times more liquid than other known clay products. This gray powder absorbent is completely odorless and Silica and Erionite free making it a safe product for your employees to use for water, grease, oil and other liquid spills. Upon application this product coagulates the liquid and immediately starts converting into an easily disposable solid.

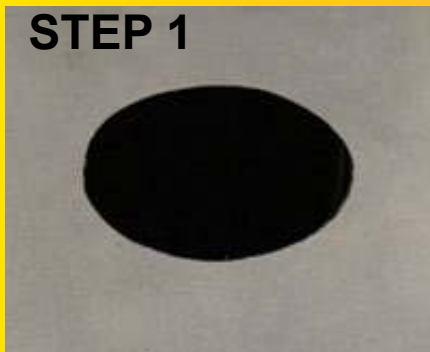


Safety First

SAFETY FIRST is an ideal safety product for use in meat and poultry plants, refrigerated trailers, food processing plants, power plants, bottling plants, receiving or shipping docks, chemical manufacturing plants, and utility companies. Regular use of this absorbent will not cause drains or sewers to clog, nor will this natural product pollute streams, lakes, or lagoons. ****CAUTION-Do not use with hydrofluoric acid****

CAPTURE is a universal spill absorbent that encapsulates up to 600% of it's weight. This very light weight, naturally occurring amazingly absorbent material fully complies with all RCRA regulations (Resources Conservation & Recovery Act). CAPTURE exceeds all standards set by the EPA regarding disposal of liquid waste.

CAPTURE is non-hazardous, non-toxic, non-carcinogenic, and noncombustible. It works well on acids, oils, solvents, bodily fluids, and more. CAPTURE is ideal for use on oils, solvents, alcohols, caustics, and mineral acids. It is white and granular. ****CAUTION-Do not use with hydrofluoric acid****



29 CFR 1910.22(A)(2) floors in your workplace should be "...Maintained in a clean and, so far as possible, a dry condition."
29 CFR 1910.107(B)(3) if floors in a spray booth or work area are combustible, they "...Shall be covered with non-combustible material of such Character as to facilitate the safe cleaning and removal of residues."

SPILL CONTROL KITS

BATTERY ACID SPILL KIT 5 GALLON #385805

- A safe, effective method for neutralizing and absorbing acid spills
- Acid absorbent contains an indicator that provides a visible color change to indicate complete neutralization
- Each kit contains 10 lbs. battery acid neutralizing sorbent, (1) pair safety goggles, (1) face shield, (1) pair chemical gloves, (1) apron, (1) pair boots, (1) broom/dust pan, (2) disposal bags with ties, and instruction sheet
- For acid spills up to 1.2 gallons



GENERAL PURPOSE SPILL KIT 6.5 GALLON

#385606

- Use on oils, water and non-aggressive fluids
- Each kit contains (4) 4 ft. socks, (2) cartons safety sorbent, (5) pads & (2) disposal bags
- Absorbs 5 gallons



GENERAL PURPOSE SPILL KIT 55 GALLON

#385655

- Use on oils, water and non-aggressive fluids
- Each kit contains (15) 4 ft. socks, (6) medium pillows, 16 lbs. safety sorbent, (100) pads, and (4) disposal bags
- Absorbs 48 gallons



BLOODBORNE CLEAN UP KIT #4736

- Blood and bodily fluid clean up environmental hygiene kit
- 6 individual kits per box,
- Complies with OSHA Bloodborne Pathogen Rule
- Heavy-duty plastic case with handle and safety latch
- Kit includes: (1) pair disposable gloves, (1) pair disposable shoe covers, (1) disposable apron, (2) scoops/scrapers, (2) red biohazard bags with ties, (1) disposable towel, (1) pair protective eyewear, (1) isolation mask, (1) 3 oz. packet of absorbent powder, (2) antiseptic wipes, Material Safety Data Sheets, (1) instruction sheet, (1) disposable wipe with HIV-1 tuberculocidal claim



UNIVERSAL/HAZMAT SPILL KIT #3857

- Offers protection against hazardous chemical or liquid spills
- Each kit absorbs 6 gallons
- Each kit contains (3) 4 ft. socks, (10) pads, (1) carton safety sorbent, (2) disposal bags, instruction sheet in a Ziploc bag



Liquid Chemical and Oil spills can cause major disruption and damage if not treated quickly and properly. Spill kits give you the tools to deal with the initial treatment and accident cleanup before things get out of hand.

OSHA requires that work sites containing hazardous materials maintain a site-specific safety and health plan for all phases of site operation. Among other things, this plan must contain a spill containment plan that meets OSHA standards. These standards require that containers used during cleanup meet the OSHA, DOT and EPA standards governing the spilled substance. Areas where a spill hazard exists must have approved containers and absorbent materials ready in case of a spill.

OSHA requires that major spills be completely contained using the established spill containment plan.

29 CFR 1910.120(J)(1)(vii) U.S. Department of transportation specified salvage drums or containers and suitable quantities of proper absorbent shall be kept available and used in areas where spills, leaks, or ruptures may occur.

1910.178(G)(2) states that facilities using batteries containing electrolyte/battery acid must provide a contingency plan in case a spill occurs.

For a full description of our absorbent products, you can visit our website, www.procheminc.com or ask your Pro Chem Sales Representative at 800-241-8180

Enviro Sorb Spill Control Product

386001 - Universal Pads - 15" x 18" x 3/8". Each pad will absorb 13 times it's weight.

386101 - Universal Rolls - 30" x 150" roll perforated in 15" x 20" rectangles. Each roll is capable of absorbing 62 1/2 gallons.

386201 - Absorbent Socks - Each sock measures 3" x 46" and will absorb 7 times it's weight.

386301 - Oil Only Pads are for use only on oil spills. Each pad measures 15"x18"x3/8", and can absorb 13 times its weight.

386401 - Drum Top Pads - Each Drum Top Pad measures 22" in diameter. They fit perfectly on the top of all drums with a hole for a pump.

386501 - Universal Rugs - These are designed for heavy spills, and measure 36"x150", and can be cut into any desired length. They will absorb up to 10 times its weight.

386801 - Hazmat Pads - Intended solely for use with hazmat spills, these pads are 15"x19" in size.



#386001-Enviro Sorb Universal Pad



#386201-Enviro Sorb Universal Socks



#386101-Enviro Sorb Universal Roll



#386301-Enviro Sorb Oil Only Pad



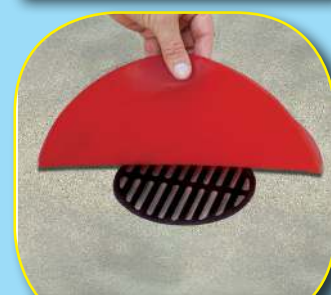
#386501-Enviro Sorb Universal Rug



#386701-Enviro Sorb Universal Boom



#356801-Enviro Sorb Hazmat Pad



#430401-Drain Covers-Circular

29 CFR 1910.120(J)(1)(viii) where major spills may occur, a spill containment program, which is part of the employer's safety and health program required in paragraph (b) of this section, shall be implemented to contain and isolate the entire volume of the hazardous substance being transferred.

40 CFR 112.7(C)(1)(vii) facilities that have the potential to pollute waterways must have "...Appropriate containment and/or diversionary structures or equipment to prevent discharge oil from reaching a navigable water course."

40 CFR 112.7(C)(1)(iv) booms and other barriers are considered an "...Appropriate containment and/or diversionary structures or equipment to Prevent a discharge."

SPILL CONTROL PRODUCTS

The following items are available for special order. Call Technical Support for more information should your customer have a need for one of these items.



430601 - Drum Safety Funnel - Permits drainage into drum



430701 - Burp Free Funnel - Threaded Brass Insert



430001 - Single Drum Containment Pallet



430201 - Two Drum Containment Pallet (Deep)



431101 - Overpack Drum 95 Gallon



430801 - Overpack Drum 20 Gallon



430901 - Overpack Drum 30 Gallon



431201 - Poly Ramp - For use with containment pallet



430101 - Two Drum Containment Pallet (Shallow)



430501 - Drain Covers - Square



431001 - Overpack Drum 65 Gallon

Patching, Coating, Anti-Skid and Repair Materials

Why does your facility need to use Patching, Coating and Repair Products?

Slips, trips and falls can cost a company:

- Loss of productivity and business
- Increased Workers Compensation and insurance premiums
- Cost associated with hiring and training a replacement

Slip, trips and falls can cost an employee:

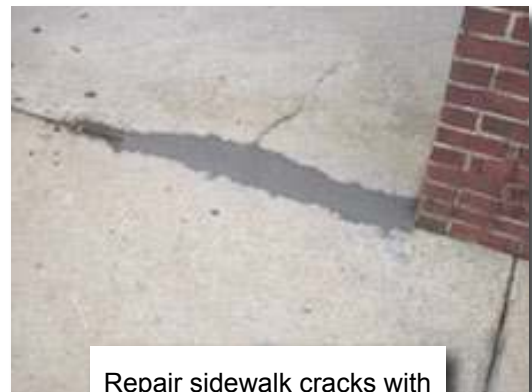
- Lost wages and out of pocket expenses
- Pain and possible disability
- Reduced Quality of life or possible death



Tred Safe

What areas of your facility can benefit from applying Patching, Coating and Repair Materials?

- Parking lots
- Sidewalks
- Concrete floors
- Concrete walls
- Concrete steps
- Ramps
- Water lines
- HVAC equipment
- Machinery and equipment
- Facility driveways
- Fuel tanks and lines



Repair sidewalk cracks with SURE PATCH #246611

Who uses Patching Coating and Repair Materials?

- Manufacturing Plants
- Schools and Universities
- Local, County and State Facilities
- Water Departments
- Park and Recreation
- Fire Departments
- Police Departments
- Airports
- Amusement Parks
- Assisted Living Facilities
- Transportation Departments
- Beverage Distributors and Bottlers
- D.O.T.
- Distribution Centers
- Military Bases

Coatings

Why does your facility need to use Coating Products?

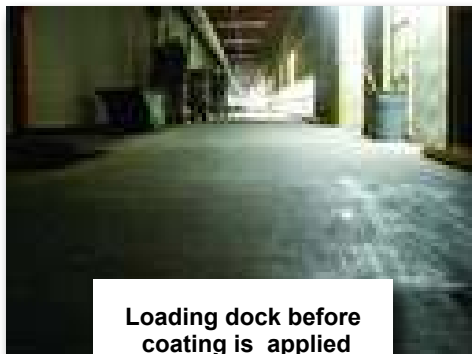
- Employee safety
- Slip and fall prevention
- Protection from surface damage
- Safety zone designation



What areas of your facility can be made safer by applying a coating?

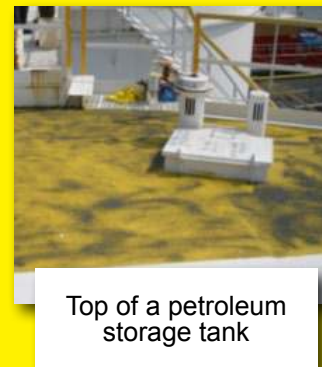
Walkways, sidewalks and stairs – These areas are frequently used, not only by employees, but guests use them as well. Coatings can provide a safe surface for all.

Warehouse, ramps and loading docks – Because these areas are heavily used by pedestrians, as well as fork lifts and other moving equipment, non-skid coatings provide extra safety allowing the equipment to stop quickly and accurately.



Locker rooms and restrooms – Highly used showers and surrounding areas produce a constantly slick surface. Applying a non-slip coating to these areas will prevent slips and falls.

Catwalks and tanks – Many facilities have catwalks for easy access to tanks and equipment. Others require maintenance on the top of a storage or mixing tank. While there are safety precautions and railings, adding a non-slip coating adds an extra layer of safety to prevent the fall from occurring.



FACT: According to the National Safety Council, stairway falls rank as the second leading cause of accidental workplace injury. At least 20% are caused by unsafe conditions. These include slippery surfaces, damaged or defective steps, or walkways.

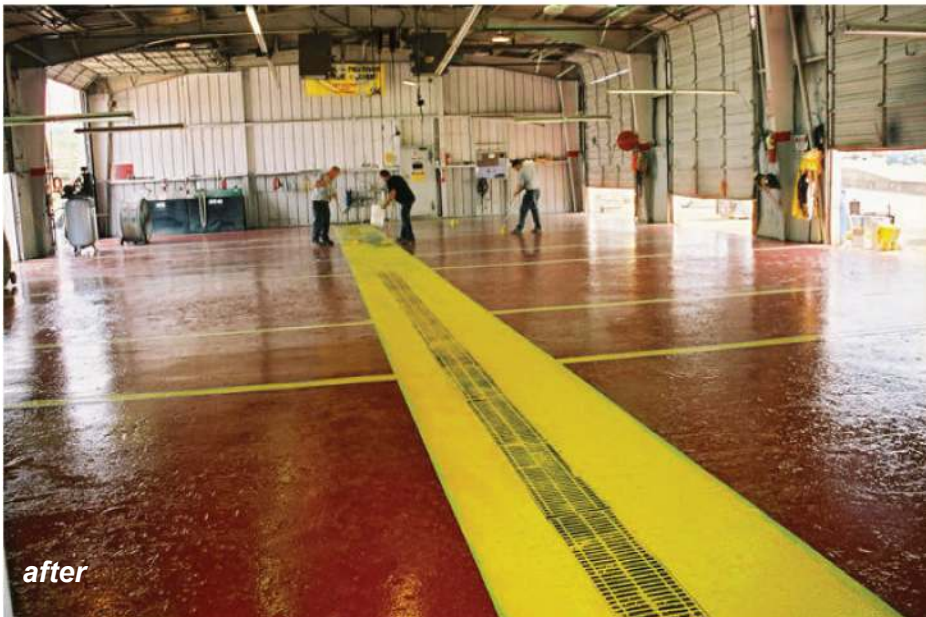
DURASEAL



Waterborne Two-Part Epoxy Concrete Coating



before



after



Light Gray



Beige



Red



Azure Blue



Green



Handicap Blue



Dark Gray



Yellow



Sand



White



Black



Two-component waterborne epoxy coating that provides a high gloss, durable finish for interior concrete. Non-flammable, no offensive odor, and VOC compliant. Excellent chemical resistance. Available as a clear sealer or in standard colors shown above. Anti-slip additives can be added for slippery areas. Pre-measured components are easy to mix and simple to apply with a short nap roller. Typical coverage is 200 to 250 ft per gallon. Clean up with soap and water.

For their employees safety, this distribution center needed to designate areas for pedestrian traffic, loading, unloading, vehicle movement, etc. Because it would be hard to empty the building for future painting, they were looking for a coating that would be durable and stand up to high traffic and spills. Dura Seal Yellow was the ideal product providing high visibility to the restricted areas.



DURA SEAL offers many solutions to our customer. To eliminate dust and create a non-skid surface in this tight but high traffic area, this customer coated their supply room with DuraSeal Red and added beads for traction

This large manufacturing facility has restricted areas, where employees are required to wear proper safety equipment. When planning their floor project, providing permanent reminders of the required safety wear for an area was at the top of their list. This customer used Dura Seal Clear for their main coating and Dura Seal Yellow to designate areas with increased requirements.

Floor Coating Products

- 248001 – Firm Grip Black with Black Aggregate
- 248002 – Firm Grip Yellow with Black Aggregate
- 248905 – Dura Seal
- 248907 – Dura Seal
- 212407 – Dura Coat
- 212507 – Dura Guard
- 211707 – Tred Safe
- 212607 – Surface Seal – Gray
- 212707 – Surface Seal – Black



What areas of your facility can be made safer by applying a coating?

TRED SAFE is the perfect option for this Hardwood Floor Manufacturing Plant. The dust created when cutting the hardwood creates a slippery film on the concrete floor. In addition to coating the primary walkway, multiple color options provide the opportunity to keep the non-slip surface consistent when marking safe and/or restricted areas surrounding the pathway.

TRED SAFE is a tough, abrasive, anti-slip one-part epoxy coating that is ideal for a variety of interior or exterior applications. It provides a textured, flat finish that will substantially reduce the threat of slippage, resulting in a far safer workplace.

TRED SAFE is perfect for use on walkways, melt surfaces, concrete steps, wood, locker room floors, ramps, boat docks, and concrete floors.

Note: TRED SAFE is not for use in areas where it will be underwater or garage floors or other areas subject to wheeled vehicle traffic.



TRED SAFE will dry tack free in 2-4 hours, ready to recoat in 18-24 hours. It is easily maintained with soap and water.

Anti-skid Products

Why does your facility need Anti Skid Products?

- Employee Safety
- Slip and fall prevention
- Protection from surface damage



These steps are standard on large pieces of equipment and are used for quick access to areas that need attention during use. Firm Grip makes them safe.

FIRM GRIP

FIRM GRIP is a 100%, three-part epoxy compound that produces a highly skid-resistant surface. It is the ideal solution for use on ramps, docks, concrete, stairs, wood, walkways, steel, and battery charging areas.

Here are a few of the many areas that can be made safe with FIRM GRIP:

- Warehouse floors
- Boat docks
- Interior and exterior stairs
- Ramps
- Loading docks
- Battery charging areas
- Showrooms
- Concrete shower areas
- Factory floors
- Locker rooms
- Airport hangers

Advantages:

- FIRM GRIP is easy to mix.
- Repairs can be made in temperatures as low as 50°F.
- Dry time of 6-8 hours

How have customers used Anti-skid products for safety?

Many of this bottling companies trucks have lift gates. They found them to be slick when the driver was loading or unloading. Originally they used Anti-Skid tape, but much of the gate remained slick. Firm Grip solved the issue by providing a permanent, non-slip surface that could be applied on the entire step.



Beverage truck deck after FIRM GRIP has been applied.

They also have repair vehicles and maintenance carts that have ledges that employees utilize when making repairs. It is important for this surface to have an anti-skid surface as there is not specific area of use.



Lift Gates



Wooden Bridge



This popular walking trail is used year round. With wet weather conditions the wooden bridges can become slippery. The parks department used Firm Grip as a coating to provide a non-slip surface for the many users.

ANTI-SKID TAPE: #4705 (Available in both 2" widths and 6" widths in 60 foot rolls) We use this on any concrete surface where potential falls and slips may be a cause of concern.

ANTI-SKID TAPE is very durable, and highly resistant to heavy traffic, water, and grease. Simply cut to the desired length, peel off the paper backing, and apply. ANTI-SKID TAPE conforms to irregular surfaces, and can be used indoors or outdoors.



ANTI SKID TAPE 2" & 6"



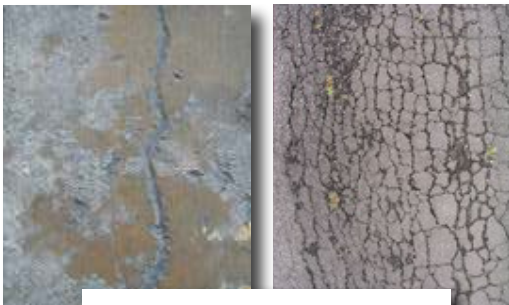
Use ANTI SKID TAPE for traction on the top of buses

This university maintains their own transit system vehicles. When the Air Conditioning Unit needs maintenance, it is necessary for technicians to walk on the top of the vehicles to access the unit. Anti-Skid tape provides a safe non-slip surface.

What are Patching and Repair Products?

- Compounds used to fill voids, large gaps or penetrations in floors or other surfaces
- High Solid, chemical resistant formulas designed to return a surface to its original state
- Patches and epoxies used to repair almost anything made of any material

Why does a facility need Patching and Repair Products?



Cracked concrete & asphalt

Over time, walkways, floors, stairways, parking lots and drives can develop imperfections. Depending on the area and the size, they can create a hazard at your facility for your employees and visitors.

High traffic and heavy equipment eventually leads to cracking, pitting, and in some cases, damage to concrete and asphalt surfaces. The use of a patching product can not only extend the life of a surface, it also enables a facility to avoid expensive resurfacing or reconstruction.



DURA BOND

Equipment, furniture and other materials are in use constantly throughout each day. It stands to reason, that even the top quality pieces will wear and possibly break with such high use.

Every building has plumbing and most manufacturing plants also have pipes with various substances flowing through them. When any of these areas develop a leak, the substance can create a hazard in that isolated area.



Why does a facility need Patching and Repair Products?

TRUE BOND PATCH applied to an airport runway



During a lightning storm, it is not unusual for it to strike this airplane runway, leaving divots in its aftermath. Our customer uses True Bond Patch for a quick repair.



Metal stair railing

This school has railings on its external staircases. After many years of exposure to rain and snow the railings have weakened. Since they were only having an issue with one slat, they opted to repair it rather than replace the entire railing. Dura Bond created a hard, permanent fix, keeping the railing in place and once again safe for students.



SURE PATCH being applied to a warehouse floor

After a heavy load tumbled when being moved by the forklift, this customer discovered an area of the concrete floor had been cracked leaving a hole. Being a high traffic area, immediate repair was needed. Pro Chem's Sure Patch was applied, eliminating a future hazard to foot and forklift traffic.



EASY PATCH being applied in a mechanical room at a manufacturing plant

Suddenly faced with a leak in a pipe, this customer applied our Easy Patch for a quick repair.

Patching

Rapid Set - #2112

Sure Patch - #2466

True Bond Patch - #2462

Easy Patch - #347901

Patching continued

C-Joint 2 gallon kit - #244502

C-Joint Cartridges Grey - #244501

C-Joint Cartridges Clear - #244503

Crack Filler - #2123

Repair

Durabond - #1475

Expando - #1474

Ice Melting Products

Why do facilities need to use Ice Melting Products?

During the winter months, there is a potential for freezing temperatures, snowstorms, icy roads and slippery sidewalks, all of which present a safety hazard. To reduce the risk of possible injuries to their guests and employees, businesses should keep their walkways, parking lots, stairs and other exposed areas free of snow and ice. Proper use of ice melting products will aid in keeping the risks to a minimum.

How do Ice Melting Products work?

Ice melt products attract moisture to themselves to form a liquid brine which generates heat and melts ice. The product must reach the pavement to become effective. Once on the pavement, the brine can spread out and break the bond the ice has with the pavement. As the ice is loosened, it can be shoveled away more easily.

What areas of your facility should be treated with Ice Melting products?

- Sidewalks
- Walkways
- Crosswalks
- Parking lots
- Bridges
- Stairs

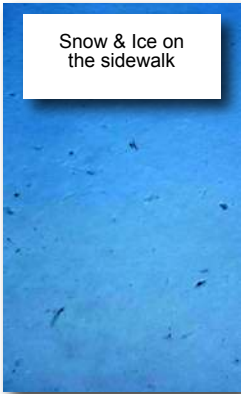


ICE FIGHTER

Ice Fighter is an ice melting compound that consists of multi-color crystals of calcium, potassium, and sodium chlorides that are fortified with UREA MAX™. Effective all the way down to -21°F, this product penetrates the snow and ice quickly, making it the ideal solution for all of your ice melting needs.



MEAN GREEN



MEAN GREEN is a snow and Ice Melting Compound that dissolves snow and ice in minutes, even when temperature is as low as 6°F. This product generates exothermic heat to power through thick ice deposits. Non- Caustic, it will not harm or irritate bare hands and does not leave a residue that can be tracked onto carpets.

PRODUCTS:

#3461 – Mean Green
#3463 – Ice Fighter
#2491 – Ice Breaker
#1261 – Ice Eraser

#415201 – Chemical Resistant Utility Sprayer
#449101 – Broadcast Spreader
#422801 – Handy Spreader
#416901 – Sno Pro

Our granular ice melts are easy to apply.

Our HANDY SPREADER #422801, is great for applying granular ice melt to stairs, walkways, landings and other small areas that larger spreaders cannot reach.



For large jobs such as parking lots, use our BROADCAST SPREADER #449101.



SNO-PRO #416901 is approved for use on Class A finishes and received the highest ratings possible from an independent testing lab for non-abrasiveness, freeze resistance and durability.



CHEMICAL RESISTANT UTILITY SPRAYER #415201



Ice Melt Precautions:

Do not over apply, follow the instructions on the label.
Use only on properly placed and cured concrete that is at least one year old.
Accidental contact is safe on grass, shrubs, carpets, concrete and skin when used as directed.
Clear snow first, then apply ice melt. Wear gloves. Ice melts are an irritant.

Personal Protection Equipment (PPE)

Why should your employees wear Personal Protection Equipment?

- Personal safety and protection
- OSHA regulations
- Product handling enhancement



What facility environment indicates the need for Personal Protection Equipment?

- Food processing
- Package handling
- Chemical handling
- Electrical equipment



What items are included in the Personal Protection Equipment Category?

- Gloves
- Respirators
- Eye Protection
- Hearing Protection
- Protective Clothing



Occupational Safety & Health Administration (OSHA) is a governmental agency responsible for implementing workplace safety by setting and requiring certain regulations and safe practice standards.

The National Institute for Occupational Safety and Health (NIOSH) is the U.S. federal agency that conducts research and makes recommendations to prevent worker injury and illness.

American National Standards Institute (ANSI) is a private non-profit organization that oversees the development of voluntary consensus standards for products, services, processes, systems, and personnel in the United States

OSHA relies on NIOSH and ANSI standards to insure quality and efficient safety protection in the workplace.

Evidence shows that companies who implement effective safety and health programs can expect to see their injury and illness rates reduced by 20 percent or more and a return of \$4 to \$6 for every dollar invested in the safety program.

OSHA Standard 29 CFR 1910.151 First Aid

This standard is designed to help with workplace accidents. OSHA Standard 29 CFR 1910-151 requires kits for any employer with 10 or more employees.

FIRST AID KIT #4091



- 6.5”L x 9.5”W x 2.75”D white metal first aid station
- Kit includes 50 adhesive strips, 4 fabric knuckle bandages, 5 fabric fingertip bandages, 3 fabric XL adhesive strips, 1 large wound pad, 5 gauze pads, 1 gauze bandage, 1 adhesive tape, 30 alcohol wipes, 6 first aid/burn cream packets, 6 triple antibiotic ointment, 3 sting relief wipes, 1 eyewash, 4 eye pads, 4 eye strips, 1 triangular bandage, 3 pain reliever packets (2/packet), 4 non-latex exam gloves, 1 cold pack, 1 scissors, 1 forceps, 1 first aid guide

First Aid Kit, #409101, meets ANSI Z308.1-2009 requirements to assist in compliance with OSHA standards for industry and construction.

OSHA Standard 29 CFR 1910.1030 Bloodborne Pathogen

This standard is designed to help prevent workplace exposure to bloodborne pathogens (not limited to HIV-1 and HBV). Section (B) (3) states where there is occupational exposure, the employer shall provide appropriate Personal Protective Equipment (PPE) to employees who come in contact with blood or bodily fluids.

BLOODBORNE CLEAN UP KIT #4736

- Blood and bodily fluid clean up environmental hygiene kit
- 6 individual kits per box, boxes cannot be broken
- Complies with OSHA Bloodborne Pathogen Rule
- Heavy-duty plastic case with handle and safety latch
- Kit includes: (1) pair disposable gloves, (1) pair disposable shoe covers, (1) disposable apron, (2) scoops/scrapers, (2) red biohazard bags with ties, (1) disposable towel, (1) pair protective eyewear, (1) isolation mask, (1) 3 oz. packet of absorbent powder, (2) antiseptic wipes, Material Safety Data Sheets, (1) instruction sheet, (1) disposable wipe with HIV-1 tuberculocidal claim



OSHA Standard 29 CFR 1910.135 Head Protection

Employees must wear protective helmets when working in areas where potential injury to the head can occur from falling or flying objects or electrical contact.



PRO CHEM HARD HAT #4288

- A rigid shell that resists and deflects blows to the head.
- A suspension system inside the hat that acts as a shock absorber.
- An insulator against electrical shocks.
- Shields your scalp, face, neck, and shoulders against splashes, spills, and drips.
- Can be modified so you can add face shields, goggles, hoods, or hearing protection to them.

OSHA Standard 29 CFR 1910.95 Ear Protection

Requires hearing protection must be available to all workers exposed at or above 85 decibels over an 8 hours period.



DISPOSABLE EAR PLUGS

#413701 & #413702

- Goin' Green disposable foam with reduction rating of 33 decibels
- One size fits all



■ Packaged 200 pr. per box

■ Packaged 100 pr. per box

OSHA Standard 29 CFR 1910.134 Respiratory Protection

Respirators must meet NIOSH approval for respiratory protection against most dusts. To protect from occupational diseases from conditions that are immediately dangerous to life caused by breathing air contaminated with hazardous levels of dusts, fog, fumes, mists, gases, smoke, sprays and vapors.



PARTICULATE RESPIRATOR #8210 #4241

- N95, NIOSH 42CFR84 approved
- High quality and economical
- Lightweight construction
- Adjustable nose clip
- Packed 20 per box



OSHA Standard 29 CFR 1910.151 Eye Protection

Employees must use appropriate eye or face protection when exposed to hazards from flying particles, molten metal, liquid chemicals, acids, chemical gases or vapors. Side shields are required when there is a hazard from flying objects.



SAFETY GLASSES TSR® Gray Hardcoat: #4775, Clear: #4776

- Ultra-lightweight but sturdy and scratch-resistant
- Temples feature aggressive sports styling and soft, padded inserts with extra flex built in for more comfort
- Soft nosepiece conforms to various nose bridge shapes for added comfort and a nonslip fit
- 9-base polycarbonate hardcoated lenses block 99.9% of UV rays and provide a 180° field of distortion-free vision
- Complies with ANSI Z87+ high impact standard
- TSR® Gray lenses: TSR=Traffic Signal Recognition

OSHA Standard 29 CFR 1910.151 Eye/Face Protection

Requires facilities for drenching and flushing of eyes or face for any person that may be exposed to corrosive chemicals . Meets ANSI Z358.12004 Safety Standards



EMERGENCY EYE AND FACE WASH

#401101

- Plastic station containing two 16-oz. bottles of saline solution
- Safety sealed and dated for preventing contamination
- Meets ANSI X358.2004 (as a personal eye wash only)
- weight - 4 lbs

OSHA Standard 29 CFR 1910.138 Hand Protection

Employers shall select and require employees to use appropriate hand protection when employees' hands are exposed to hazards such as those from skin absorption of harmful substances: severe cuts or lacerations; severe abrasions; puncture, chemical burns; thermal burns and harmful temperature extremes.



437801
Palm Coated Flat-Dip Nitrile with Sandy Foam Palm CE



436401
Double Leather Palm with Orange Safety Cuff



438001 (Size: L)
438002 (Size: XL)
Black Nylon Knit with Sandy Foam Nitrile Coated Palm Knit Wrist.



471201
Safety Cuff Leather Palm



437901
HPPE with PU Coated Palm & Fingers



471101
Knit Wrist Leather Palm



438101
Gray Nylon Shell with Gray PU Coated Palm & Fingers



413601 (Size:L)
413602 (Size:XL)
413603 (Size:2-XL)
Leather Work/ Driving



437701
Poly/Cotton Bleached White String Knit



436501
Yellow Flock Lined Latex



437101
Premium Terry Lined Nylon



436601
Flock Lined Orange Latex



437601
Cotton/Poly String Knit with Latex Coated Palm & Fingers



470701
Orange Foam Lined PVC



475701
Long Sleeve Neoprene Lined



437501
**Double Palm
Canvas Knit Wrist**



471301 (Size: L)
471302 (Size: XL)
Flock Lined Nitrile



437201
**Insulated
Rubber-Dipped**



436801
Unlined Nitrile



437401
**Cotton PVC
Dotted Palm
Knit Wrist**



436701
**18" Fully Coated
Black PVC**



475601
Brown Jersey



438201
**18" Neoprene Wet
Grip Flannel Lined**



437301
**Hot Mill Band
Top Cuff**



437001
**Disposable
Polyethylene**



470901 (Size: L)
470902 (Size: XL)
Nitrile Disposable



476901
Latex Disposable



438301 (Size: L)
438302 (Size: XL)
438303 (Size: XXL)
**Orange Nitrile
Disposable**



436901 (Size: L)
436902 (Size: XL)
**Nitrile Disposable
Black**



474601
**Clear Vinyl
Disposable**

- More than 25% of all workplace accidents involve hand injuries. 70% were the result of not wearing gloves, and 30% were due to wearing the wrong glove.



Pro Chem Inc.

1475 Bluegrass Lakes Parkway
Alpharetta, GA 30004

800-241-8180 | www.procheminc.com